

Fr.Er.

This message will appear if the frequency of the main is not standard 50 or 60 Hz. This message can appear as a result of the interference during the lamp starting (if the lamp or igniter is old) or as a result of the interference by neighbouring devices. **In these cases the message does not affect the fixture operating!**

MA.Er. (Master error)

The message informs you that the fixture was addressed as a master and DMX signal is connected to its input. Disconnect the DMX controller from fixture's input and address the fixture as the master again.

10. Technical specifications

Power supply:

- EU-model-Voltage.....208/230/240V AC, 50/60 Hz ~
-Fuse.....T 6.3 A@230V
- US-model-Voltage.....100/120/208/230 V AC, 50/60 Hz ~
-Fuse.....T 10 A@120V
-Power consumption....800 VA

Motors:

- 13 high quality stepping-motors controlled by microprocessors

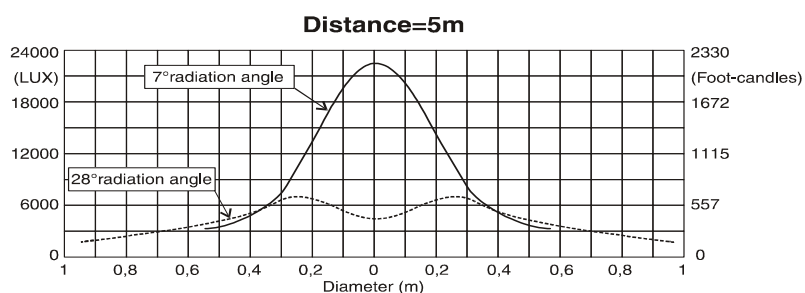
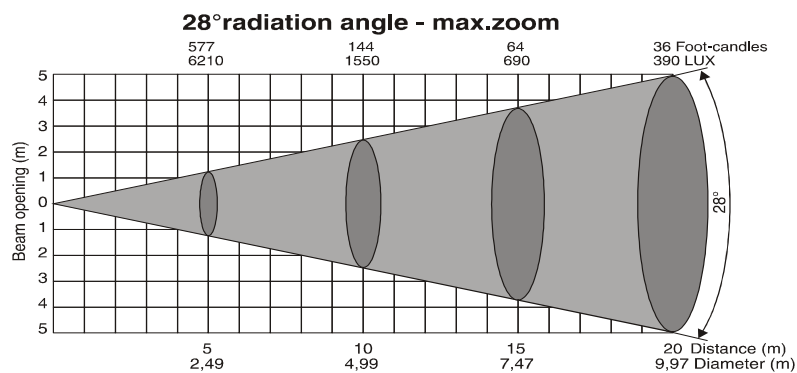
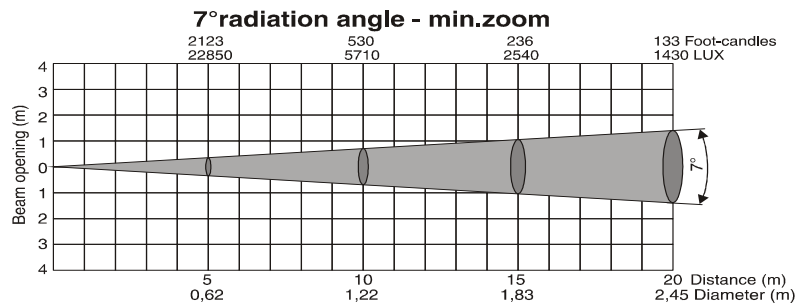
Lamps:

- Philips MSR 575/2 95V/575W GX-9,5

Optical system:

- High luminous-efficiency parabolic reflector
- Zoom 7°-28°
- 200 mm Fresnel lens
- All lenses are anti-reflection coated

Beampath:



Colours:

- CMY-colours mixing system
- 4 dichroic colour-filters plus white,colour temperature filters 3200 K and 5600 K ,UV filter
- Colour-wheel with variable rotation speed in both directions

Strobe:

- Strobe effect with variable speed (1 - 10 flashes per second)

Dimmer:

- Smooth dimmer from 0 - 100 %

Zoom:

- Remotely controllable via DMX
- Motorized multi-step-zoom between 7° and 28° beam angles.

Effects:

- Beam shaper
- Frost filter

Electronics:

- Addressing,special functions setting,effects calibration via control panel with 4-digit LED display
- Readout fixture and lamp usage,receiving DMX values,temperature, etc
- Built-in analyzer for easy fault finding,error messages
- Remotely switching of the lamp
- Built-in demo sequences
- Black-out while head moving or color changing
- Silent fans cooling,remotely controllable speed of fans
- Studio mode for reducing high frequency noise of pan/tilt motors
- Master/slave operation
- Self-resetable thermo-fuse
- Digital serial input DMX-512
- 16 control-channels (full 16 bit protocols):

Channel	Mode 1-16bit	Mode 2-16bit	8 bit
1	Pan	Pan	Pan
2	Tilt	Fine Pane	Tilt
3	Fine Pan	Tilt	Pan/Tilt speed
4	Fine Tilt	Fine Tilt	Fans,Lamp On/Off
5	Pan/Tilt speed	Pan/Tilt speed	Colours
6	Fans, On/Off lamp	Fans, On/Off lamp	Cyan
7	Colours	Colours	Magenta
8	Cyan	Cyan	Yellow
9	Magenta	Magenta	CMY speed
10	Yellow	Yellow	Colour macros
11	Speed of CMY	Speed of CMY	Effect wheel
12	Colour macros	Colour macros	Zoom
13	Effect wheel	Effect wheel	Strobe
14	Zoom	Zoom	Dimmer
15	Shutter, strobe	Shutter, strobe	
16	Dimmer	Dimmer	

Pan/Tilt:

- Pan movement range 530°
- Tilt movement range 280°
- 8/16 bit movement resolution
- Automatic Pan / Tilt position correction
- Maximum PAN-movement 530° in 2.65 s
- Maximum TILT-movement 280° in 1.68 s
- Remotely controllable speed of Pan/Tilt movement for easy programming

Rigging:

- Stands directly on the floor
- Mounts horizontally or vertically with 2 clamps
- 2 truss orientation
- Safety chain/cord attachment bolt

Temperatures:

- Maximum ambient temperature t_a : 40° C
- Maximum housing temperature t_b (steady state): 80° C

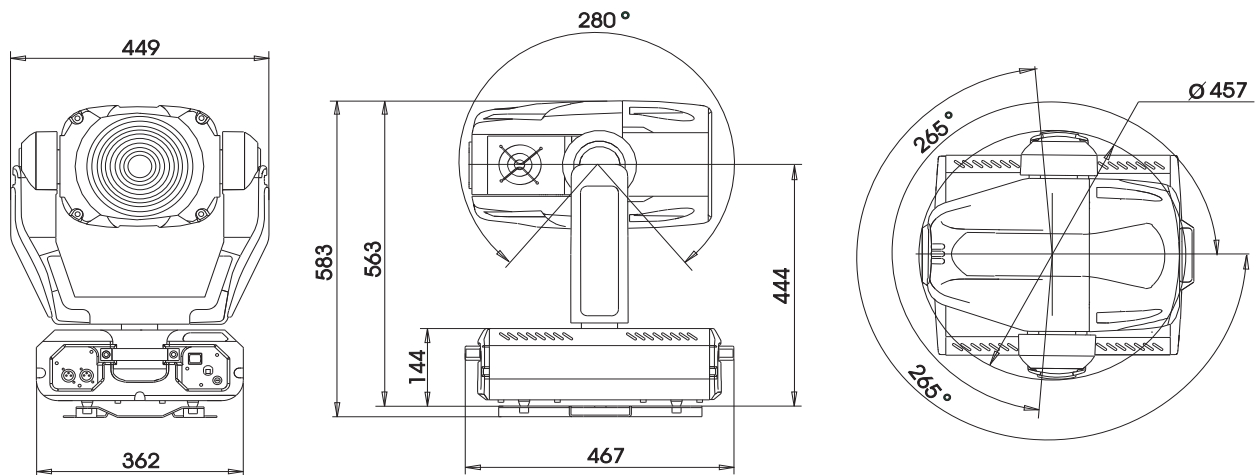
Minimum distances:

Min.distance from flammable surfaces: 0,7m

Min.distance to lighted object: 1,5m

Dimensions and weight:

- Length of base (including handles): 467 mm
- Width of yoke: 449 mm
- Height (head horizontal): 583 mm
- Weight (net): 32,0 kg
- Shipping weight: 43,5 kg



Accessories

- Omega holder (2 pieces).....99010420